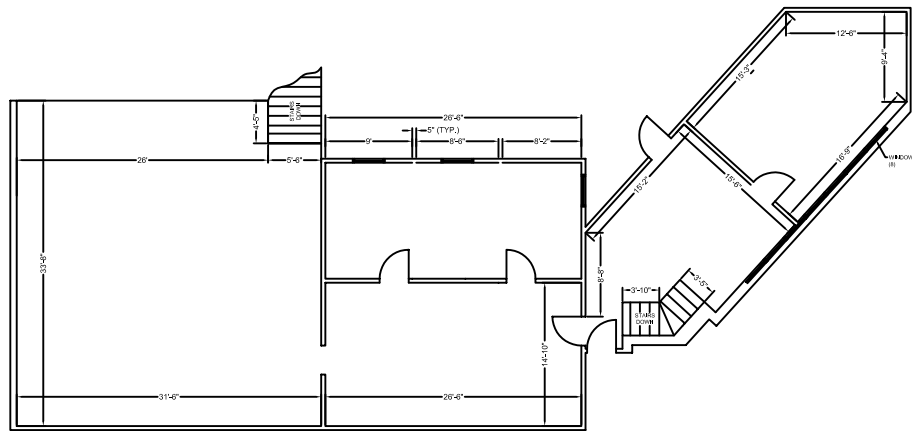
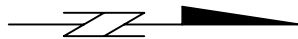


FIRST FLOOR



SECOND FLOOR MEZZANINE



LOCATION: #7 - 2345 AVENUE C NORTH, SASKATOON

SCALE 1"= 13'-4"

AREA: 7502 SQ. FT. (FUTURE ELECTRICAL ROOM SUBTRACTED)

NOTES: 8' CEILINGS, 16' CEILING IN WAREHOUSE AREA,  
DOCK AND GRADE LOADING



DRAWN BY: R. RITTER

DATE: 22JUN06

MODIFIED BY: J. WIEBE

DATE MODIFIED: 26JUL10

APPROVED BY: