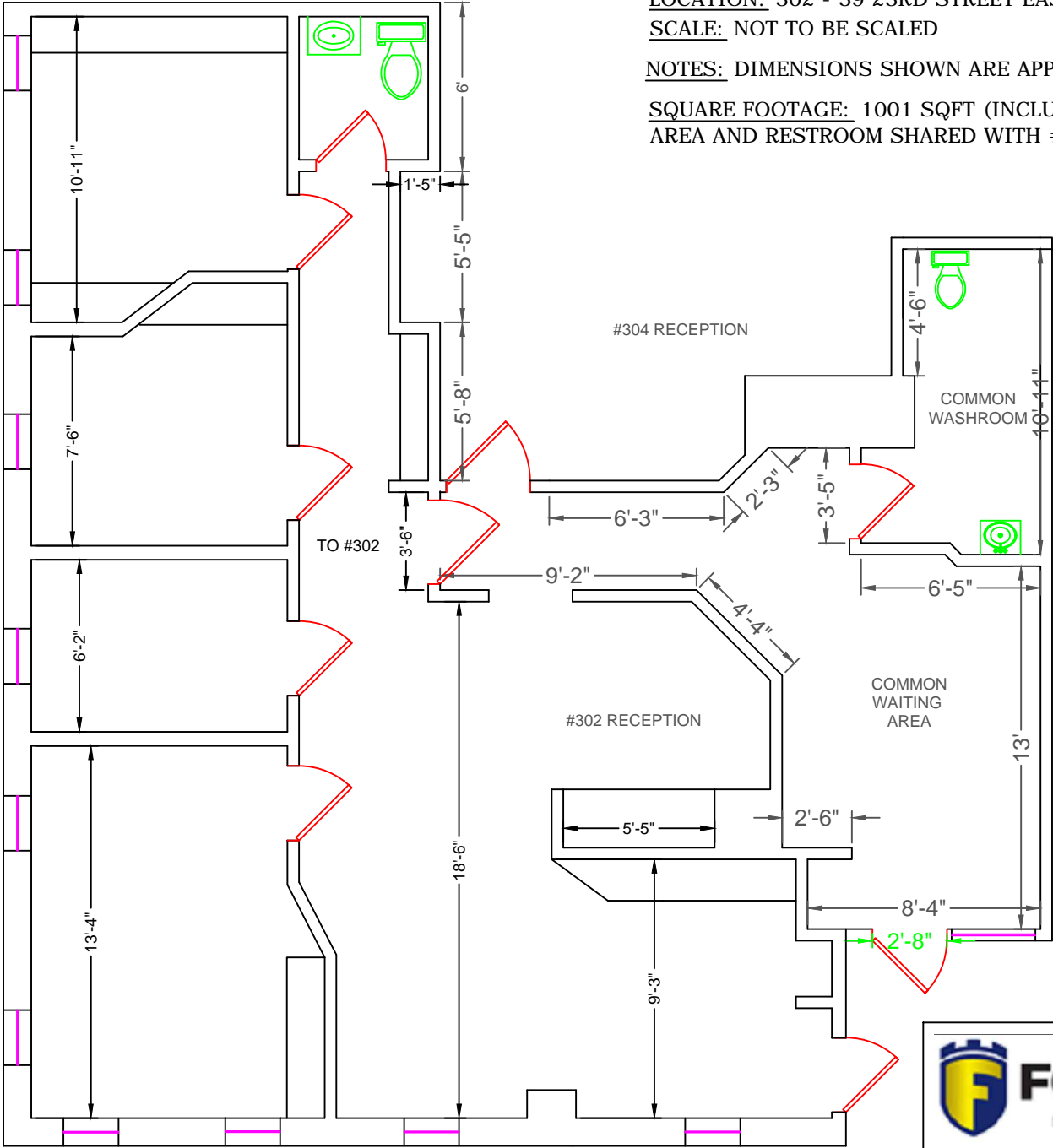


LOCATION: 302 - 39 23RD STREET EAST, SASKATOON

SCALE: NOT TO BE SCALED

NOTES: DIMENSIONS SHOWN ARE APPROXIMATE

SQUARE FOOTAGE: 1001 SQFT (INCLUDES 48.54% OF THE WAITIN AREA AND RESTROOM SHARED WITH #304)



FORTRESS
PROPERTIES INC.

DRAWN BY: ROBIN RIEHL
DATE: OCTOBER 2013